

MINI DSP BURNER Application Manual

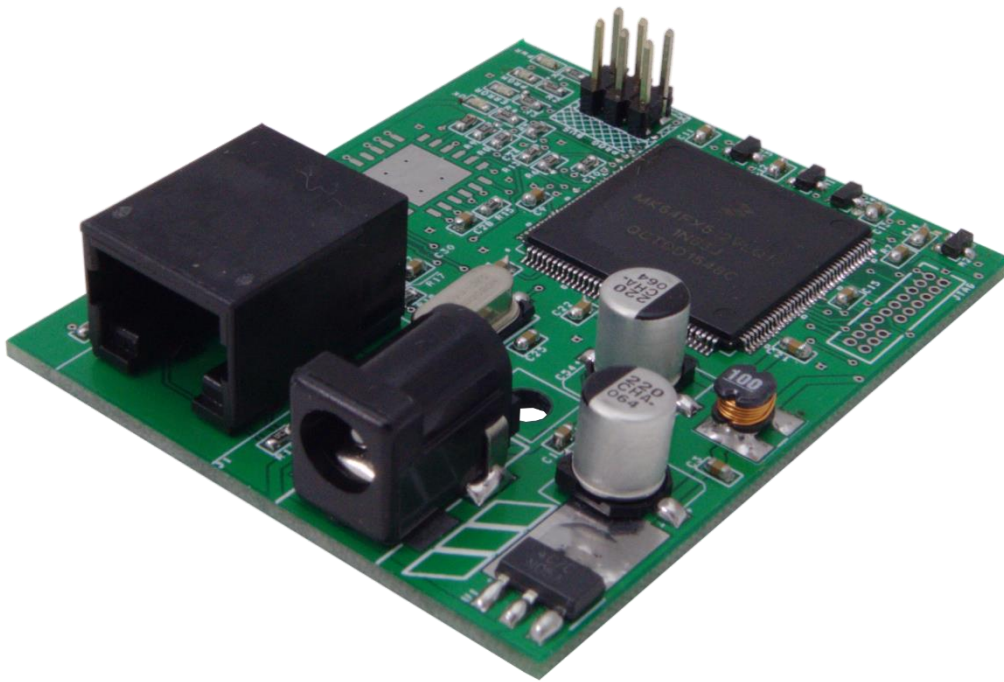


Table of contents

1.	System overview	3
2.	Features.....	3
3.	MINI DSP module connections and LEDs	3
3.1.	Indication LEDs	4
4.	Values and specification.....	4
4.1.	Voltage and Current ratings	4
5.	Drawings.....	5

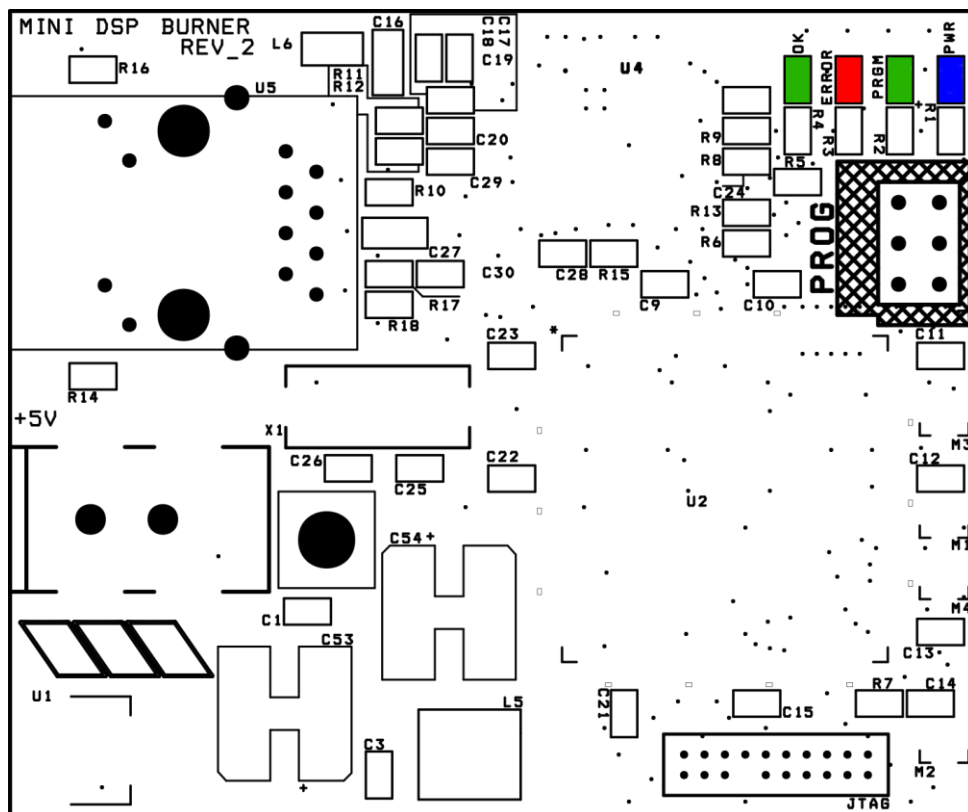
1. System overview

MINI DSP Burner is the necessary complement for MINI DSP family, except MINI DSP EVM KIT. This board is an interface tool between the software and the hardware, like a programmer. With this board it's possible to download the firmware to the MINI DSP or to the MINI DSP PLATE, or interact in real time, modifying the parameters of the DSP. Users can use real time interacting to adjust the audio settings, and when all is done, save all the settings and start to download the firmware to the MINI DSP boards. This board can work as a standalone programmer, for example in manufacturing lines. Waveland Designer software communicates with MINI DSP Burner via Ethernet and download the active layout to the board. Indicator LEDs inform to the user the status of the programming process.

2. Features

- Ethernet port for connect with Waveland Designer.
- 4 Status LEDs for programing process status indication.
- Standalone programming, without computer. Just connect to a MINI DSP board and download.
- Small Size, only 50mm x 60mm
- For using with MINI DSP BOARD and MINI DSP PLATE.

3. MINI DSP module connections and LEDs



Name	Description
U5	RJ45 Ethernet connector.
+5V	Main power jack input.
PROG	Programming port for MINI DSP family

3.1. Indication LEDs

Name	Description
Power	Power OK on MINI DSP BURNER
Error	Problems on communication or programming process.
Prgm	This LED blinks during programming process or real time operation.
OK	The download process went well.

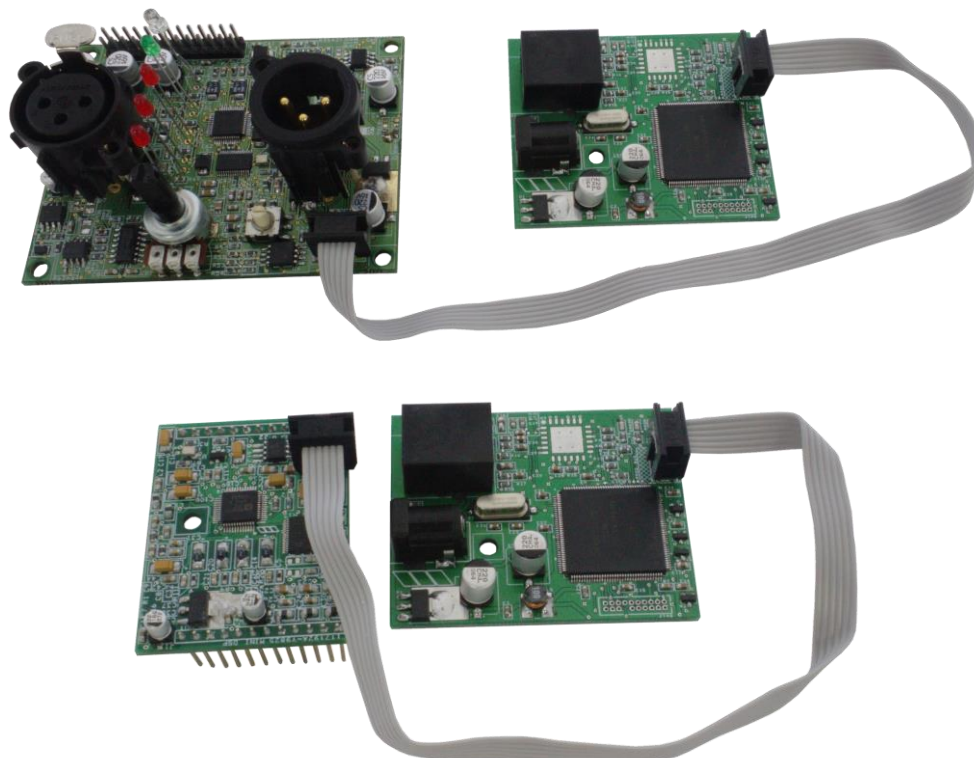
4. Values and specification

4.1. Voltage and Current ratings

Name	Description	MIN	TYP	MAX	UNIT
Vin +5V	Main input voltage.	4.5	5	6	V

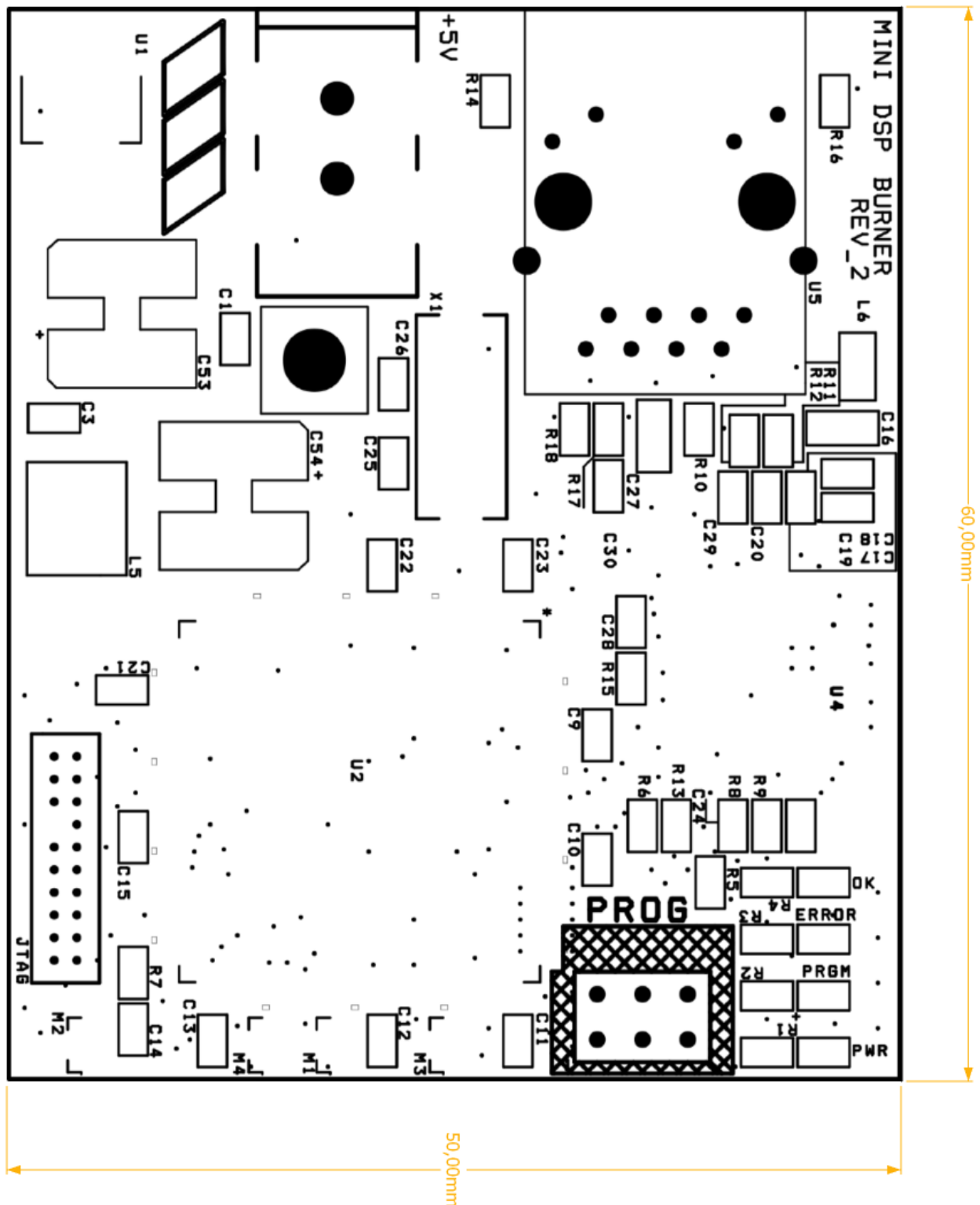
5. How to connect

For programming the MINI DSP family, only connect the programmer to the MINI DSP board or to the MINI DSP PLATE on the MINI DSP and start to download the firmware. This process can be done with a computer or without a computer, in standalone mode. For connecting to the PC/MAC direct or xover RJ45 cables can be used.



6. Drawings

*All measures are in mm.



Additional information	
PCB thickness	1.6 mm
Solder mask	Green